

접수번호 : 22-077286-01-1
(Receipt No.)



안전확인신고 증명서

Confirmation Letter of Declaration

신고번호 (Application No.) : ZU101076-22002
신고회사명 (Applicant) : MEAN WELL (Guangzhou) Electronics Co.,Ltd.
주소 (Address) : No.11 Jingu South Road, Huadu District, Guangzhou 510890, Guangdong, China
제품명 (Product) : 컴퓨터용 전원공급장치(Switching Power Supply)
기본모델명 (Basic Model) : LRS-75-5
파생모델명 (Series Model) : Not Applicable
정격/안전기준상의 모델구분 (Rating) : Input: AC 100-240 V, 50/60 Hz, 1.52 A;
Output: DC 5 V, 14 A
안전기준 (Standard) : KC62368-1(2021-08)

본 확인신고는 제조국명 : 중국
제조업자명 : MEAN WELL (Guangzhou) Electronics Co.,Ltd.
제조공장의 주소 : No.11 Jingu South Road, Huadu District, Guangzhou 510890, Guangdong, China
의 제품에만 해당함

「전기용품 및 생활용품 안전관리법 시행규칙」 제28조제1항, 같은 조 제3항, 제29조제2항 또는 제34조제2항에 따라 안전확인신고 증명서를 발급합니다.

We issue this Confirmation Letter of Declaration of the Safety Confirmation for the above appliance in accordance with the Article 28(1), 28(3), 29(2) or 34(2) of the Enforcement Rule of the Electrical Appliances and Consumer Products Safety Control Act.

2022 년 12 월 28 일
Year month day

한국산업기술시험원장
KOREA TESTING LABORATORY



* 이 신고증명서는 「전기용품 및 생활용품 안전관리법」에 따른 제품의 안전성 확인에 한정된 것이며, 그 밖의 다른 법률이 적용되는 제품의 경우에는 해당 법률에 따라 추가로 인증·허가 등을 받아야 합니다.

첨부서류
1. 전기용품의 안전관리부품 및 재질목록(List of Critical Components)(전기용품에 한정한다)
2. 기본모델·파생모델의 내용(Description of the basic and series model)
3. 안전확인신고 내용의 변경 현황(Revisions Status)

□ 첨부 1 : 전기용품의 안전관리부품 및 재질목록
List of Critical Components

부품명(회로기호) Component(Part no.)	제조사(상표명) Manufacturer(Brand)	모델명(형식) Model(Type)	정격 또는 특성 Rating or Characteristics	인증마크 Tested by
Terminal Block (TB1)	Dinkle Enterprise Co Ltd	DT-45, DT-49	25 A, 300 V	UL
(Alternate)	Cixi Pans Automatic Control Equipment Fty	PT-49	25 A, 300 V	UL
(Alternate)	Cixi Pans Automatic Control Equipment Fty	PT-4C	20 A, 300 V	UL
(Alternate)	Degson Electronics Co Ltd	DG45S	25 A, 300 V	UL
(Alternate)	Degson Electronics Co Ltd	DG46S	30 A, 300 V	UL
(Alternate)	Dinkle Enterprise Co Ltd	DT-4	20 A, 300 V	UL
(Alternate)	Jite Industrial (Shenzhen) Co Ltd	BTB-654	20 A, 300 V	UL
(Alternate)	Switchlab Inc	T14, T34	25 A, 300 V	UL
(Alternate)	Switchlab Inc	MWX30	20 A, 300 V	UL
(Alternate)	Switchlab Inc	MWX100E, MWX100-500, MWX100F, MWX100-508	16 A, 300 V	UL
(Alternate)	Switchlab Inc	T44	15 A, 300 V	UL
(Alternate)	Switchlab Inc	MA311, MA321, MA331	15 A, 300 V	UL
Primary Connector (CN1) (Provided when terminal block is not used)	Taiwan King Pin	P89501	Min. 3 A, 250 Vac	TUV
Fuse (FS1)	Conquer	MST-series	T3.15 AL, 250 Vac or 300 Vac	VDE
(Alternate)	Walter	2010-Series	T3.15 AL, 250 Vac or 300 Vac	VDE
(Alternate)	Littelfuse	369	T3.15 AL, 250 Vac or 300 Vac	VDE
Bleeder Resistor (R1, R2, R3) (when U4 without provided)	Tzai Yuan Enterprise Co., Ltd.	SMD1206*****, SMD1210*****, SMD2010*****, SMD2512*****	Max. 180 kΩ , min. 1/4 W	--
Bleeder Resistor (R1, R3) (when U4 provided)	Tzai Yuan Enterprise Co., Ltd.	SMD1206*****, SMD1210*****, SMD2010*****, SMD2512*****	Max. 180 kΩ , min. 1/4 W	--

부품명(회로기호) Component(Part no.)	제조사(상표명) Manufacturer(Brand)	모델명(형식) Model(Type)	정격 또는 특성 Rating or Characteristics	인증마크 Tested by
X-Capacitors (C1) (optional) (X1 or X2 Cap.)	Liow Gu	GS-L	Max. 0.82 uF, min. 250 V, min. 100 °C	VDE
(Alternate)	Arcotronics or KEMET	R.46	Max. 0.82 uF, min. 250 V, min. 100 °C	ENEC
(Alternate)	Arcotronics or KEMET	R.49	Max. 0.82 uF, min. 250 V, min. 100 °C	ENEC
(Alternate)	TDK (Zhuhai FTZ) Co., Ltd.	B3292#-...	Max. 0.82 uF, min. 250 V, min. 100 °C	VDE
(Alternate)	Iskra	KNB1530	Max. 0.82 uF, min. 250 V, min. 100 °C	VDE
(Alternate)	Iskra	KNB1560	Max. 0.82 uF, min. 250 V, min. 100 °C	VDE
(Alternate)	Pilkor	PCX2 335	Max. 0.82 uF, min. 250 V, 85 °C	ENEC
(Alternate)	Pilkor	PCX2 335M	Max. 0.82 uF, min. 250 V, min. 85 °C	ENEC
(Alternate)	Pilkor	PCX2 337	Max. 0.82 uF, min. 250 V, min. 100 °C	ENEC
(Alternate)	Ultra Tech	HQX	Max. 0.82 uF, min. 250 V, min. 100 °C	VDE
(Alternate)	Cheng Tung	CTX	Max. 0.82 uF, min. 250 V, min. 100 °C	ENEC
(Alternate)	Hua Jung	MKP	Max. 0.82 uF, min. 250 V, min. 100 °C	ENEC
(Alternate)	Carli	MPX	Max. 0.82 uF, min. 250 V, min. 100 °C	ENEC
(Alternate)	Joey	MPX	Max. 0.82 uF, min. 250 V, min. 100 °C	ENEC
(Alternate)	Xiamen Faratronic	MKP62	Max. 0.82 uF, min. 250 V, min. 100 °C	ENEC
Choke (LF1) (Optional)	Mean Well	LF-5006	130 °C	--
Y Capacitors (C4, C24, C30, C129) (optional) (Y1 or Y2 type)	Murata	KX	Max. 4700 pF, min. 250 V, 125 °C	VDE
(Alternate)	Walsin	AH, AS	Max. 4700 pF, min. 250 V, 125 °C	ENEC
(Alternate)	Walsin	AC	Max. 4700 pF, min. 250 V, 125 °C withstand voltage 2600Vac	VDE, ENEC
(Alternate)	TDK	CD	Max. 4700 pF, min. 250 V, 125 °C	VDE
(Alternate)	Welson	WD	Max. 4700 pF, min. 250 V, 125 °C	VDE
(Alternate)	Vishay	VY1	Max. 4700 pF, min. 250 V, 125 °C	VDE

부품명(회로기호) Component(Part no.)	제조사(상표명) Manufacturer(Brand)	모델명(형식) Model(Type)	정격 또는 특성 Rating or Characteristics	인증마크 Tested by
(Alternate)	Vishay	WKP	Max. 4700 pF, min. 250 V, 125 °C	VDE
(Alternate)	Vishay	440L...	Max. 4700 pF, min. 250 V, 85 or 125 °C	VDE
Photo Coupler (U2, U3)	Lite-On Technology Corporation	LTV-817	Reinforced insulation	VDE
(Alternate)	COSMO Electronics Corporation	K1010	Reinforced insulation	VDE
(Alternate)	Lite-On Technology Corporation	LTV-817M	Reinforced insulation	VDE
(Alternate)	Sharp Corporation, Sakai Factory	PC123 Option Y PC123 series	Reinforced insulation	VDE, DEMKO
(Alternate)	COSMO Electronics Corporation	KP1010	Reinforced insulation	VDE
(Alternate)	Toshiba Electronic Devices & Storage Corporation	TLP781	Reinforced insulation	VDE
(Alternate)	Toshiba Electronic Devices & Storage Corporation	TLP781F	Reinforced insulation	VDE
(Alternate)	Everlight Electronics Co., Ltd.	EL817	Reinforced insulation	VDE
Coupling capacitor (C31, C32) (optional) (Y1 or Y2 type)	Murata	KX, KH, KY	Max. 3300 pF, min. 250 V, 125 °C	VDE
(Alternate)	Walsin	AH, AC	Max. 3300 pF, min. 250 V, 125 °C	ENEC
(Alternate)	TDK	CD, CS	Max. 3300 pF, min. 250 V, 125 °C	VDE
(Alternate)	Welson	WD, KL	Max. 3300 pF, min. 250 V, 125 °C	VDE
(Alternate)	Vishay	VY1	Max. 3300 pF, min. 250 V, 125 °C	VDE
(Alternate)	Vishay	WKP	Max. 3300 pF, min. 250 V, 125 °C	VDE
(Alternate)	Vishay	440L...	Max. 3300 pF, min. 250 V, 85 or 125 °C	VDE
Transformer (T1)	Mean Well	TF-5289	Class B	Accepted by TÜV Rheinland
Metal Chassis	Interchangeable	Interchangeable	Metal, min. 0.6 mm thick	--

부품명(회로기호) Component(Part no.)	제조사(상표명) Manufacturer(Brand)	모델명(형식) Model(Type)	정격 또는 특성 Rating or Characteristics	인증마크 Tested by
PCB	Interchangeable	Interchangeable	V-1 or better, min. 105 °C	UL

유의사항 (Attention) :

1. 안전관리부품은 전기적인 안전에 직접적인 영향을 주는 부품으로서 안전인증기관이 정기공장검사 시 확인 관리 하는 사항입니다. 따라서 상기목록에 기재된 사항을 변경하거나 또는 복수등재를 원하시는 경우는 안전인증기관에 인증변경신청을 하여야 합니다.

As the "Critical components" are parts in directly related with safety, these components shall be checked during a factory inspection by the certification body. In case of applying multiple listing or changing the items above, the certification revision shall be applied.

2. 인증변경신청 없이 임의로 변경하는 경우는, 전기용품 및 생활용품 안전관리법 시행규칙 제 21 조제 1 항 또는 제 38 조제 1 항 규정에 의한 안전인증 취소 혹은 안전확인신고 효력상실 사유가 됨을 유의하시기 바랍니다.

The Safety Certification will be cancelled under the Article 21(1), 38(1) of the Enforcement Rule of the Electrical appliances and Consumer Products Safety Control Act if the contents of the Certification is altered without our authorization.

첨부 2 : 기본모델 · 파생모델의 내용
Description of the basic and series model

파생모델명 Derivative model	기본모델과의 차이점 Differences between the basic and derivative model(s)
Not applicable	
제품특기사항 및 시험조건 Remarks & Test conditions	
<p>1. Review Ref. No.: 22-077286-01-2 - DEKRA Ref. No.:4397403.50</p> <p>2. Product Description: - Measured Power Consumption: 81.5 W - Insulation Class: Class I - Protection against Ingress of water: IPX0 - Mass of Equipment: 0.22 kg</p>	
<p><input type="checkbox"/> 본 제품의 검토내용에 관하여 의문사항이 있으시면 아래 연락처로 문의하시기 바랍니다. 검토 담당자 : 고객지원본부 인증융합평가센터 장 재용 / 02-8601-137 <i><input type="checkbox"/> If you have any question on product review, please contact the person below :</i> <i>Job holder: Customer Support Division, Certification Convergence Evaluation Center, J.Y. Jang / +82 2 860-1137</i></p>	

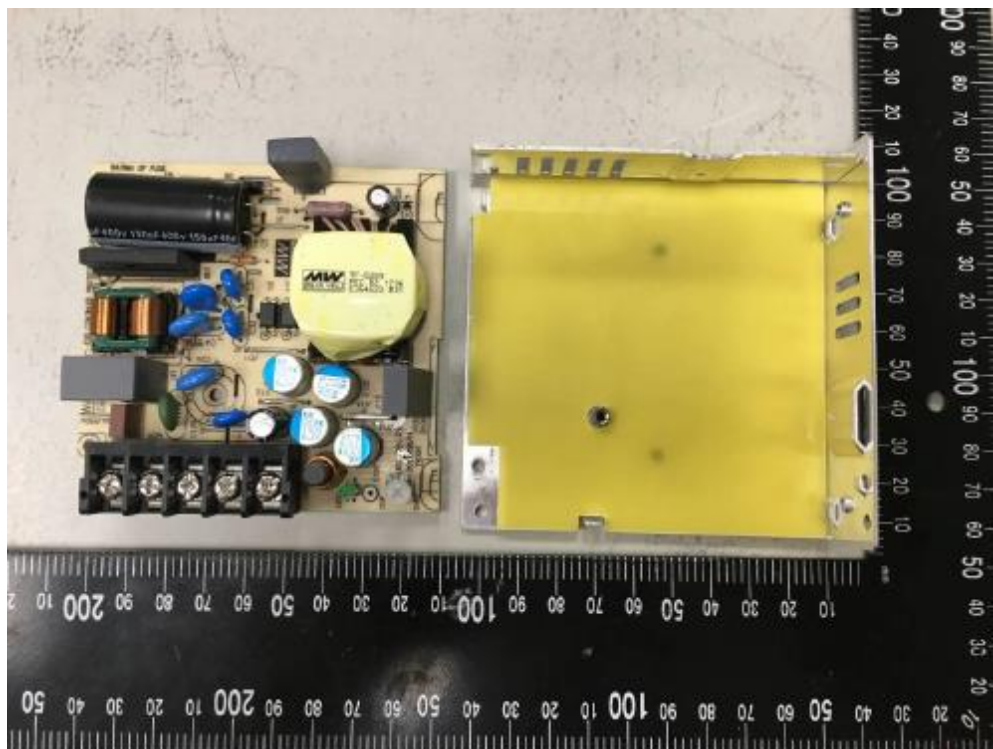
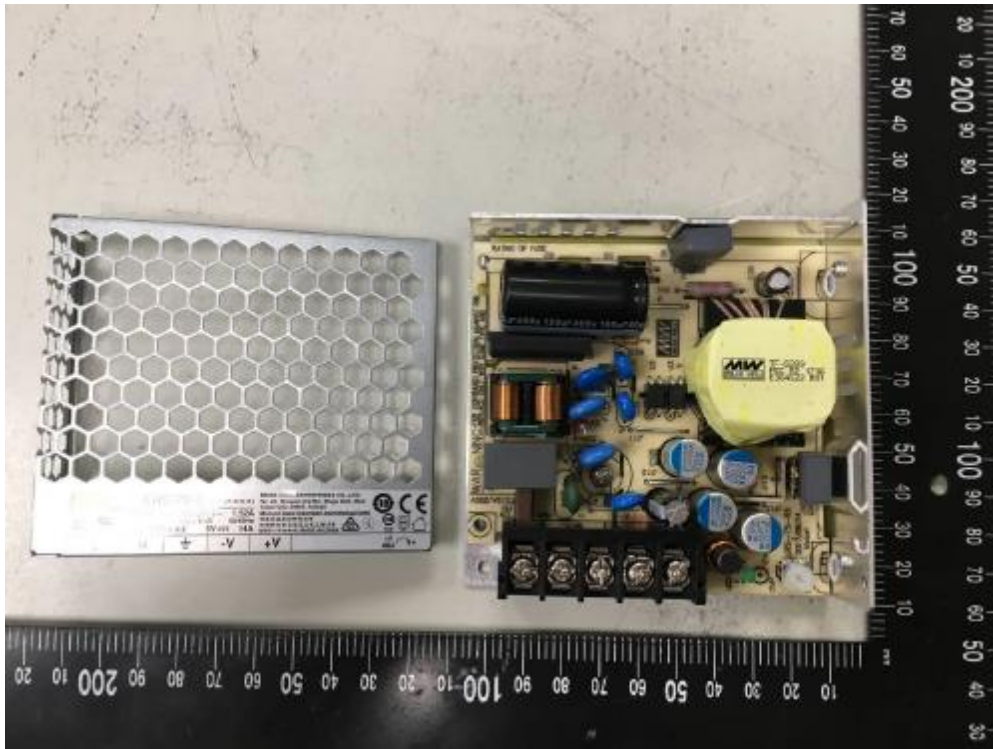
첨부 3 : 안전확인신고 내용의 변경 현황
Revisions Status

변경발급 내용 Contents of Certificate Revisions
Not applicable

FP511-06

첨부 : 제품사진
Photographs





접수번호 : 22-079945-01-1
(Receipt No.)



안전확인신고 증명서

Confirmation Letter of Declaration

신고번호 (Application No.) : ZU101076-22003
신고회사명 (Applicant) : MEAN WELL (Guangzhou) Electronics Co.,Ltd.
주소 (Address) : No.11 Jingu South Road, Huadu District, Guangzhou 510890, Guangdong, China
제품명 (Product) : 컴퓨터용 전원공급장치(Switching Power Supply)
기본모델명 (Basic Model) : LRS-75-12
파생모델명 (Series Model) : See the attachment 2
정격/안전기준상의 모델구분 (Rating) : Input: AC 100-240 V, 50/60 Hz, 1.52 A;
Output: DC 12 V, 6 A;
안전기준 (Standard) : KC62368-1 (2021-08)

본 확인신고는 제조국명 : 중국
제조업자명 : MEAN WELL (Guangzhou) Electronics Co.,Ltd.
제조공장의 주소 : No.11 Jingu South Road, Huadu District, Guangzhou 510890, Guangdong, China
의 제품에만 해당함

「전기용품 및 생활용품 안전관리법 시행규칙」 제28조제1항, 같은 조 제3항, 제29조제2항 또는 제34조제2항에 따라 안전확인신고 증명서를 발급합니다.

We issue this Confirmation Letter of Declaration of the Safety Confirmation for the above appliance in accordance with the Article 28(1), 28(3), 29(2) or 34(2) of the Enforcement Rule of the Electrical Appliances and Consumer Products Safety Control Act.

2022 년 12 월 29 일
Year month day

한국산업기술시험원장
KOREA TESTING LABORATORY



* 이 신고증명서는 「전기용품 및 생활용품 안전관리법」에 따른 제품의 안전성 확인에 한정된 것이며, 그 밖의 다른 법률이 적용되는 제품의 경우에는 해당 법률에 따라 추가로 인증·허가 등을 받아야 합니다.

첨부서류
1. 전기용품의 안전관리부품 및 재질목록(List of Critical Components)(전기용품에 한정한다)
2. 기본모델·파생모델의 내용(Description of the basic and series model)
3. 안전확인신고 내용의 변경 현황(Revisions Status)

□ 첨부 1 : 전기용품의 안전관리부품 및 재질목록
List of Critical Components

부품명(회로기호) Component(Part no.)	제조사(상표명) Manufacturer(Brand)	모델명(형식) Model(Type)	정격 또는 특성 Rating or Characteristics	인증마크 Tested by
Terminal Block (TB1)	Dinkle Enterprise Co Ltd	DT-45, DT-49	25 A, 300 V	UL
(Alternate)	Cixi Pans Automatic Control Equipment Fty	PT-49	25 A, 300 V	UL
(Alternate)	Cixi Pans Automatic Control Equipment Fty	PT-4C	20 A, 300 V	UL
(Alternate)	Degson Electronics Co Ltd	DG45S	25 A, 300 V	UL
(Alternate)	Degson Electronics Co Ltd	DG46S	30 A, 300 V	UL
(Alternate)	Dinkle Enterprise Co Ltd	DT-4	20 A, 300 V	UL
(Alternate)	Jite Industrial (Shenzhen) Co Ltd	BTB-654	20 A, 300 V	UL
(Alternate)	Switchlab Inc	T14, T34	25 A, 300 V	UL
(Alternate)	Switchlab Inc	MWX30	20 A, 300 V	UL
(Alternate)	Switchlab Inc	MWX100E, MWX100-500, MWX100F, MWX100-508	16 A, 300 V	UL
(Alternate)	Switchlab Inc	T44	15 A, 300 V	UL
(Alternate)	Switchlab Inc	MA311, MA321, MA331	15 A, 300 V	UL
(Alternate)	Dinkle Enterprise Co Ltd	166 series	12 A, 300 V	UL
Primary Connector (CN1) (Provided when terminal block is not used)	Taiwan King Pin	P89501	Min. 3 A, 250 Vac	TUV
Fuse (FS1)	Conquer	MST-series	T3.15 AL, 250 Vac or 300 Vac	VDE
(Alternate)	Walter	2010-Series	T3.15 AL, 250 Vac or 300 Vac	VDE
(Alternate)	Littelfuse	369	T3.15 AL, 250 Vac or 300 Vac	VDE
Bleeder Resistor (R1, R2, R3) (when U4 without provided)	Tzai Yuan Enterprise Co., Ltd.	SMD1206*****, SMD1210*****, SMD2010*****, SMD2512*****	Max. 180 kΩ , min. 1/4 W	--

부품명(회로기호) Component(Part no.)	제조사(상표명) Manufacturer(Brand)	모델명(형식) Model(Type)	정격 또는 특성 Rating or Characteristics	인증마크 Tested by
Bleeder Resistor (R1, R3) (when U4 provided)	Tzai Yuan Enterprise Co., Ltd.	SMD1206*****, SMD1210*****, SMD2010*****, SMD2512*****	Max. 180 k Ω , min. 1/4 W	--
X-Capacitors (C1) (optional) (X1 or X2 Cap.)	Liow Gu	GS-L	Max. 0.82 uF, min. 250 V, min. 100 °C	VDE
(Alternate)	Arcotronics or KEMET	R.46	Max. 0.82 uF, min. 250 V, min. 100 °C	ENEC
(Alternate)	Arcotronics or KEMET	R.49	Max. 0.82 uF, min. 250 V, min. 100 °C	ENEC
(Alternate)	TDK (Zhuhai FTZ) Co., Ltd.	B3292#-...	Max. 0.82 uF, min. 250 V, min. 100 °C	VDE
(Alternate)	Iskra	KNB1530	Max. 0.82 uF, min. 250 V, min. 100 °C	VDE
(Alternate)	Iskra	KNB1560	Max. 0.82 uF, min. 250 V, min. 100 °C	VDE
(Alternate)	Pilkor	PCX2 335	Max. 0.82 uF, min. 250 V, 85 °C	ENEC
(Alternate)	Pilkor	PCX2 335M	Max. 0.82 uF, min. 250 V, min. 85 °C	ENEC
(Alternate)	Pilkor	PCX2 337	Max. 0.82 uF, min. 250 V, min. 100 °C	ENEC
(Alternate)	Ultra Tech	HQX	Max. 0.82 uF, min. 250 V, min. 100 °C	VDE
(Alternate)	Cheng Tung	CTX	Max. 0.82 uF, min. 250 V, min. 100 °C	ENEC
(Alternate)	Hua Jung	MKP	Max. 0.82 uF, min. 250 V, min. 100 °C	ENEC
(Alternate)	Carli	MPX	Max. 0.82 uF, min. 250 V, min. 100 °C	ENEC
(Alternate)	Joey	MPX	Max. 0.82 uF, min. 250 V, min. 100 °C	ENEC
(Alternate)	Xiamen Faratronic	MKP62	Max. 0.82 uF, min. 250 V, min. 100 °C	ENEC
Choke (LF1) (Optional)	Mean Well	LF-5006	130 °C	--
Y Capacitors (C4, C24, C30, C129) (optional) (Y1 or Y2 type)	Murata	KX	Max. 4700 pF, min. 250 V, 125 °C	VDE
(Alternate)	Walsin	AH, AS	Max. 4700 pF, min. 250 V, 125 °C	ENEC
(Alternate)	Walsin	AC	Max. 4700 pF, min. 250 V, 125 °C withstand voltage 2600Vac	VDE, ENEC
(Alternate)	TDK	CD	Max. 4700 pF, min. 250 V, 125 °C	VDE

부품명(회로기호) Component(Part no.)	제조사(상표명) Manufacturer(Brand)	모델명(형식) Model(Type)	정격 또는 특성 Rating or Characteristics	인증마크 Tested by
(Alternate)	Welson	WD	Max. 4700 pF, min. 250 V, 125 °C	VDE
(Alternate)	Vishay	VY1	Max. 4700 pF, min. 250 V, 125 °C	VDE
(Alternate)	Vishay	WKP	Max. 4700 pF, min. 250 V, 125 °C	VDE
(Alternate)	Vishay	440L...	Max. 4700 pF, min. 250 V, 85 or 125 °C	VDE
Photo Coupler (U2, U3)	Lite-On Technology Corporation	LTV-817	Reinforced insulation	VDE
(Alternate)	COSMO Electronics Corporation	K1010	Reinforced insulation	VDE
(Alternate)	Lite-On Technology Corporation	LTV-817M	Reinforced insulation	VDE
(Alternate)	Sharp Corporation, Sakai Factory	PC123 Option Y PC123 series	Reinforced insulation	VDE, DEMKO
(Alternate)	COSMO Electronics Corporation	KP1010	Reinforced insulation	VDE
(Alternate)	Toshiba Electronic Devices & Storage Corporation	TLP781	Reinforced insulation	VDE
(Alternate)	Toshiba Electronic Devices & Storage Corporation	TLP781F	Reinforced insulation	VDE
(Alternate)	Everlight Electronics Co., Ltd.	EL817	Reinforced insulation	VDE
Coupling capacitor (C31, C32) (optional) (Y1 or Y2 type)	Murata	KX, KH, KY	Max. 3300 pF, min. 250 V, 125 °C	VDE
(Alternate)	Walsin	AH, AC	Max. 3300 pF, min. 250 V, 125 °C	ENEC
(Alternate)	TDK	CD, CS	Max. 3300 pF, min. 250 V, 125 °C	VDE
(Alternate)	Welson	WD, KL	Max. 3300 pF, min. 250 V, 125 °C	VDE
(Alternate)	Vishay	VY1	Max. 3300 pF, min. 250 V, 125 °C	VDE
(Alternate)	Vishay	WKP	Max. 3300 pF, min. 250 V, 125 °C	VDE
(Alternate)	Vishay	440L...	Max. 3300 pF, min. 250 V, 85 or 125 °C	VDE

부품명(회로기호) Component(Part no.)	제조사(상표명) Manufacturer(Brand)	모델명(형식) Model(Type)	정격 또는 특성 Rating or Characteristics	인증마크 Tested by
Transformer (T1) (for model LRS-75-12)	Mean Well	TF-5290	Class B	Accepted by TÜV Rheinland
Transformer (T1) (for model LRS-75-15)	Mean Well	TF-5291	Class B	Accepted by TÜV Rheinland
Transformer (T1) (for model LRS-75-24)	Mean Well	TF-5292	Class B	Accepted by TÜV Rheinland
Transformer (T1) (for model LRS-75-36)	Mean Well	TF-5293	Class B	Accepted by TÜV Rheinland
Transformer (T1) (for model LRS-75-48)	Mean Well	TF-5294	Class B	Accepted by TÜV Rheinland
Metal Chassis	Interchangeable	Interchangeable	Metal, min. 0.6 mm thick	--
PCB	Interchangeable	Interchangeable	V-1 or better, min. 105 °C	UL

유의사항 (Attention) :

1. 안전관리부품은 전기적인 안전에 직접적인 영향을 주는 부품으로서 안전인증기관이 정기공장검사 시 확인 관리 하는 사항입니다. 따라서 상기목록에 기재된 사항을 변경하거나 또는 복수등재를 원하시는 경우는 안전인증기관에 인증변경신청을 하여야 합니다.

As the "Critical components" are parts in directly related with safety, these components shall be checked during a factory inspection by the certification body. In case of applying multiple listing or changing the items above, the certification revision shall be applied.

2. 인증변경신청 없이 임의로 변경하는 경우는, 전기용품 및 생활용품 안전관리법 시행규칙 제 21 조제 1 항 또는 제 38 조제 1 항 규정에 의한 안전인증 취소 혹은 안전확인신고 효력상실 사유가 됨을 유의하시기 바랍니다.

The Safety Certification will be cancelled under the Article 21(1), 38(1) of the Enforcement Rule of the Electrical appliances and Consumer Products Safety Control Act if the contents of the Certification is altered without our authorization.

첨부 2 : 기본모델 · 파생모델의 내용
Description of the basic and series model

파생모델명 Derivative model	기본모델과의 차이점 Differences between the basic and derivative model(s)
LRS-75-15	It is identical to basic model except for model designation, output ratings, transformer (T1) and the ratings and type number of some primary and secondary components (Output: DC 15 V, 5 A)
LRS-75-24	It is identical to basic model except for model designation, output ratings, transformer (T1) and the ratings and type number of some primary and secondary components (Output: DC 24 V, 3.2 A)
LRS-75-36	It is identical to basic model except for model designation, output ratings, transformer (T1) and the ratings and type number of some primary and secondary components (Output: DC 36 V, 2.1 A)
LRS-75-48	It is identical to basic model except for model designation, output ratings, transformer (T1) and the ratings and type number of some primary and secondary components (Output: DC 48 V, 1.6 A)
제품특기사항 및 시험조건 Remarks & Test conditions	
<p>1. Review Ref. No.: 22-079945-01-2 - DEKRA Ref. No.:4397403.51</p> <p>2. Product Description: - Measured Power Consumption: 82.3 W - Insulation Class: Class I - Protection against Ingress of water: IPX0 - Mass of Equipment: Approx. 0.22 kg</p>	
<p><input type="checkbox"/> 본 제품의 검토내용에 관하여 의문사항이 있으시면 아래 연락처로 문의하시기 바랍니다. 검토 담당자 : 고객지원본부 인증융합평가센터 장 재용 / 02-8601-137</p> <p><input type="checkbox"/> <i>If you have any question on product review, please contact the person below :</i> <i>Job holder: Customer Support Division, Certification Convergence Evaluation Center, J.Y. Jang / +82 2 860-1137</i></p>	

FP511-05

첨부 3 : 안전확인신고 내용의 변경 현황
Revisions Status

변경발급 내용 Contents of Certificate Revisions
Not applicable

FP511-06

첨부 : 제품사진
Photographs



